



# Pi Gamma Mu

International Honor Society in Social Sciences

The mission of Pi Gamma Mu is to encourage and promote excellence in the social sciences and to uphold the ideals of scholarship and service.

Number 160

November 2008

## SCHOLARSHIP APPLICATION DEADLINE - JANUARY 30, 2009

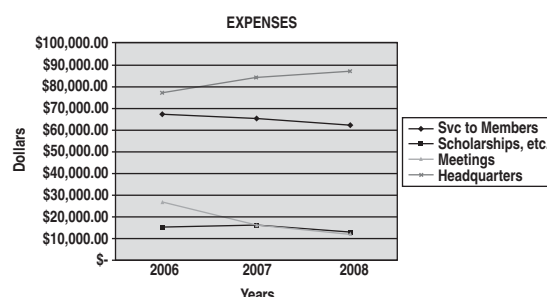
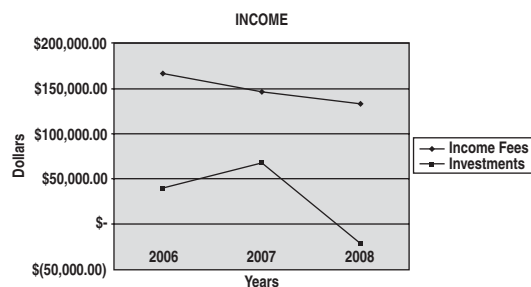
Each year Pi Gamma Mu issues ten scholarships to outstanding members. Four are named scholarships, three are worth \$2,000 each, and the other seven are worth \$1,000 each. These scholarships are primarily intended for first-year graduate work in the social sciences. If you are interested in applying, you

should start putting your information together right away. Applications (see inside) must be fully completed and received at the Pi Gamma Mu office in Winfield with a postmark on or before January 30. Winners will be notified in March, with the grants awarded in September.

## TRIENNIAL FINANCIAL REPORT

During the last triennium, Pi Gamma Mu increased memberships by 11,232. This brings total membership in the society's 84 year history to 235,438. A total of 168 chapters initiated members in the past three years.

The following financial reports are submitted to the chapters to fulfill the requirement of the constitution. They present three aspects of the fiscal affairs of the Society - the income and expenses for the last triennium, the proposed annual budgets for the next triennium, and the cumulative results of Pi Gamma Mu's 84 years of operation:



### PROPOSED TRIENNIAL BUDGETS

INCOME				EXPENSES			
	2009	2010	2011		2009	2010	2011
Initiation Fees	150,000	151,000	152,000	Services to Members	66,900	67,500	68,000
Investments	2,000	4,000	4,500	Scholarships/Lectures	15,500	17,000	17,500
Other	34,725	35,000	35,500	Headquarters	90,000	90,750	91,000
<b>Total Income</b>	<b>186,725</b>	<b>190,000</b>	<b>192,000</b>	Meetings	26,000	11,000	12,000
				<b>Total Expenses</b>	<b>198,400</b>	<b>186,250</b>	<b>188,500</b>
				<b>NET INCOME</b>	<b>-11,675</b>	<b>3,750</b>	<b>3,500</b>

Direct services to members include initiates' key pins, membership certificates and cards, *International Social Science Review*, *Pi Gamma Mu Newsletter*, and postage to mail these items. Headquarters expenses include staff salaries, insurance, printing, and all the costs required for operating an international society. Meetings cover the costs of the Triennial convention, the annual board meetings, regional meetings, as well as expenditures incurred by officers when they represent the Society. All trustees and governors volunteer their time and expertise, but they are reimbursed for costs when they travel for Pi Gamma Mu. During the triennium the net worth of the Society increased by \$85,684.30, due to the stock market.

### STATEMENT OF ASSETS AND LIABILITIES

#### ASSETS

Current Assets	
Cash	55,230.30
Investments	523,711.36
Accrued Interest Receivable	1,701.53
Inventory	5,166.19
Prepaid Insurance Premiums	1,820.76
<b>Total Current Assets</b>	<b>587,630.14</b>
Furniture & Fixtures less depreciation	6,849.02
<b>Total Assets</b>	<b>594,479.16</b>

#### LIABILITIES AND OWNERS' EQUITY

Current Liabilities	4,028.32
Equity	590,415.84
<b>Total Liabilities</b>	<b>594,479.16</b>

## NOTES FROM THE PRESIDENT

(This article is being reprinted from the July issue, which was incomplete.)

As we move toward this year's Pi Gamma Mu Triennial Convention in Atlanta Georgia, it is time to review new priorities and progress over the last three years. Pi Gamma Mu membership has always been a favorable factor in members getting a job and is considered a plus in Federal Service. Our Pi Gamma Mu Board of Trustees recently voted to work with the career service *Experience* to establish a Career Center for members. The new Pi Gamma Mu Career Center will enable students and faculty advisers to search for jobs and internships on an extensive internet employment jobs listing service provided by *Experience*. We have experimented with the service and found the jobs national in scope and also found references on this service to be favorable. In addition to job search, the PGM Career Center will help students build portfolios as well as provide articles of guidance in contemporary professions. We expect the new PGM Career Service to be operational by the beginning of next academic year. We appreciate Sue Watters and the PGM Board of Trustees working with *Experience* to get this important career service operational.

The last three years have been a period of chapter growth and reactivation as we have moved from 123 to 150 active chapters. We are trying to be more responsive to chapter needs and our level of communications with chapters has been prioritized and has increased considerably. Our communication network has been expanded to current chapters as well as new chapters and former chapters that need to be reactivated. Along with other projects, this growth has meant we have more resources to advance our technology and enable our staff to work on the new career service. The phones in headquarters ring steadily as our staff respond to chapter needs. We live in challenging times but our awareness that our chapters, members and faculty advisers are the "life blood" of Pi Gamma Mu has enabled us to overcome the decline in chapters that so many honor societies are experiencing.

Since this issue is dedicated to students, I want to emphasize that our Pi Gamma Mu ideals of scholarship and service will serve you well. However, we might examine our more debated ideal.... that of sacrifice, where we must give of our time and

resources to accomplish our mission in life. I believe each of us has a destiny in life and the poet Robert Frost articulates this well in the poem, *Two Tramps in Mud Time*:

*'Only where love and need are one  
And the work is play for Mortal Stakes,  
Is the deed ever really done  
For Heaven and the future's sakes'*

Where work and play are merged, sacrifice in time and resources has more meaning and what we might have considered sacrifice becomes the meaningful life. I challenge you to place the concept of sacrifice in this higher context in finding your mission in life. We wish you great success in finding your destiny!

Gordon Mercer  
PGM International President

## HONOR CORDS FOR GRADUATION



For those of you graduating this year, there are honor cords available at the Pi Gamma Mu office. You can proudly wear these attractive royal blue and white cords at your graduation. The price of the cords is \$15.00 each plus \$2.95 for shipping and handling. It is quite an honor to be a member of Pi Gamma Mu International Honor Society and honor cords are our most popular item. Please plan ahead and order your honor cords early. Send your check and return mailing address to headquarters (PGM, 1001 Millington, Suite B, Winfield, KS 67156) or call (620-221-3128) to give us a credit/debit card.

## SCHOLARSHIP WINNERS ANNOUNCED

After much deliberation on the part of the Scholarship Committee, Chairman Dr. Charles McClellan recommended the following scholarship winners to the Board of Trustees. Each of these candidates has met the expectations of the trustees who are pleased to award the scholarships to:



Erin Conner

**Erin Conner**, from the Illinois Pi chapter at McKendree University is the recipient of the \$2,000 Marvel Stockwell Scholarship. Erin is now attending St. Louis University Law School. She has a passion for health law. Erin received a double major in Biology and Political Science, and took courses in international law, constitutional law, human anatomy and animal physiology. Erin said, "I hope to attend law school so that I can help people fight those corporations or individuals that disregard health standards. I hope to work for either a private firm or for an executive agency, such as the Food and Drug Administration. Regardless of whether I represent governmental interests or private interests, I want to fight for victims' rights."

Dr. Brian Frederking, Associate Professor of Political Science at McKendree, stated, "Erin is a tremendous asset to any class: driven to succeed, conscientious about her work, and a leader in classroom discussion. She has all the skills we want to develop in students: she knows the substance of her major areas, she can write, she can speak, she can research, and she can argue...She is a member of the Honors Council, Public Affairs Forum, and is a Student Ambassador...Erin embodies everything we want in a student: intelligence, dedication, and seriousness of purpose."

Dr. Barbara Donovan, chapter sponsor and Political Science instructor, told us that "Ms. Chen can write beautifully, but the structure and argument of her writing are what are truly remarkable. She has a sophisticated intellect that she can translate easily into finely-crafted, well-argued essays, research papers, and honors theses. On a personal level, Ms. Chen's character reflects a hard-working individual, committed to both academic excellence and personal integrity...She was instrumental in institutionalizing a model UN program on campus and participated for four years now in the annual model UN conference at Harvard."



Hwei-Yu  
(Lois) Chen

Winner of the \$2,000 Carroll Parish scholarship is **Hwei-Yu (Lois) Chen** from the Georgia Gamma chapter at Wesleyan College. Lois is now matriculating at Carnegie-Mellon University. She is "interested in international policy and economic development...of the role of the United Nations in the international system, especially in East Asia. With an advanced degree,...I would like to pursue a career as a Foreign Service Officer. For example, I would like to work in the Straits Exchange Foundation or the Mainland

Affairs Council that is in charge of the technical and business matters between China and Taiwan...The type of work that I want to pursue requires not only a broad perspective of the global system, but also a deep understanding in economics, politics, and culture."

Dr. Barbara Donovan, chapter sponsor and Political Science instructor, told us that "Ms. Chen can write beautifully, but the structure and argument of her writing are what are truly remarkable. She has a sophisticated intellect that she can translate easily into finely-crafted, well-argued essays, research papers, and honors theses. On a personal level, Ms. Chen's character reflects a hard-working individual, committed to both academic excellence and personal integrity...She was instrumental in institutionalizing a model UN program on campus and participated for four years now in the annual model UN conference at Harvard."

The \$2,000 Effie Urquhart scholarship is given to **Lindsay Morgan Wilke**, who joined PGM through the Kansas Alpha chapter  
*continued on page 5*



# APPLICATION FOR PI GAMMA MU SCHOLARSHIP

(eligibility is for up to four years from initiation into Pi Gamma Mu)

All scholarship applications must contain the following components: this application cover sheet, personal statement, resume, transcripts from all institutions of higher learning attended, and at least three letters of recommendation from individuals qualified to assess the applicant's academic merit. Only complete applications will be considered for awards.

## I. PERSONAL

Name \_\_\_\_\_ Citizenship \_\_\_\_\_

(1) School address \_\_\_\_\_ (2) Home address \_\_\_\_\_

Phone number \_\_\_\_\_ Phone number \_\_\_\_\_

Pi Gamma Mu Chapter \_\_\_\_\_ Date of Initiation \_\_\_\_\_

## II. EDUCATION

List below all institutions of higher learning you have attended. Submit, with your application, transcripts from each. For application purposes, photocopies will suffice, but scholarship recipients will be required to submit official transcripts.

School	Degree	Graduation Date
_____	_____	_____
_____	_____	_____
_____	_____	_____

## II. GRADUATE EDUCATION

Graduate Major \_\_\_\_\_ Degree Sought \_\_\_\_\_

Career for which you are preparing \_\_\_\_\_

List in order of preference, the graduate schools to which you are applying \_\_\_\_\_

\_\_\_\_\_  
\_\_\_\_\_

## IV. PERSONAL STATEMENT

Submit a personal essay (about 500 words) stating why you have chosen your field of graduate study and what you hope to achieve by a career in this field. What special qualities/skills/training/expertise do you possess that will likely make you a success in your graduate work?

## V. RESUME

Include in your resume a full description of your activities as an undergraduate and those since graduation (if applicable). This may encompass honors and scholarships, leadership positions, social service activities, employment record, travel experiences, foreign languages, professional presentations, memberships in organizations, and/or publications.

## VI. LETTERS OF REFERENCE

List below the names of your references. Ask each to send a letter of recommendation directly to the Pi Gamma Mu office. Reviewers would be most interested in knowing the referee's opinion on the applicant's intellectual qualities and his/her chance for success in graduate school. Feel free to make any comments appropriate to the evaluation, but consider, in particular, the following: the quality of written and oral skills; the ability to think on one's feet and to make public presentations; the ability to analyze and to think deeply, abstractly and critically; the skills to interact with others socially and intellectually; the ability to accept constructive criticism.

	Name	Position	Address
1.	_____	_____	_____
2.	_____	_____	_____
3.	_____	_____	_____

I understand that the decision of the judges is final.

Signed \_\_\_\_\_ Date \_\_\_\_\_ Social Security # \_\_\_\_\_

Scholarships are awarded only to Pi Gamma Mu members. Recipients must plan to do graduate work in one of the following areas of study: sociology, anthropology, political science, history, economics, international relations, public administration, criminal justice, law, social work, cultural geography or psychology. Other interdisciplinary fields will be considered on an individual basis based upon the degree to which the social sciences are an integral component of the overall course of study. In such cases, applicants should submit a program description outlining requirements and coursework. Business Administration is specifically excluded from consideration. No more than three scholarships will be given annually in any one graduate field.

Completed applications should be mailed to Pi Gamma Mu, 1001 Millington, Suite B, Winfield, KS 67156, and postmarked no later than January 30. Notification of winners will be made in March with grants awarded in September.



**SCHOLARSHIP WINNERS ANNOUNCED** – *continued from page 2*

Lindsay  
Morgan Wilke

at Southwestern College. She is in the graduate program at Vanderbilt University's College of Education and Human Development to obtain a M.Ed. in Community Development Action. Lindsay's career goal is to work as a Service-Learning Coordinator or Community Specialist with an emphasis on youth. She received her major in Biology with minors in Leadership Studies and Psychology. She would like to lead community development by working with college-aged students or youth in a community and teach them about the principles of service-learning through mission trips and community empowerment activities.

Dr. Cheryl Rude, Director of Leadership Southwestern and professor of Leadership Studies, tells us that Lindsay, "excels in her written work, she is always prepared with quality material; she delivers oral presentations in an engaging manner. Lindsay also shows the strength of her interpersonal skills in group work...Her work on the leadership team has involved her in multitude of service opportunities: delivering commodities to the elderly, working on a campus blood drive, coordination of campus recycling, coaching for an elementary soccer clinic which was offered free of charge to area players, and serving children on the Big Brothers Big Sisters waiting list by organizing an after-school event that matched children up with college students. Her sophomore year effort was to design and implement an after-school leadership development program for elementary students in the community which required curriculum review, writing a development program for elementary students in the community which required curriculum development, implementation, and evaluation...Lindsay Morgan brings to life the ideals of Pi Gamma Mu—excellence in social sciences, scholarship and service."



Tricia Shelton

The Dan Quigley Law Scholarship, which honors PGM's long-time corporate attorney, is given to **Tricia Shelton**. Tricia is from the Kansas Eta chapter at Baker University. She is now matriculating at The University of Kansas School of Law. Because of her dedication and drive, Tricia finished her bachelor's degree two years early, even while pursuing substantial leadership roles on campus as well as part-time employment.

She stated that, "being a mass-media major has allowed me the opportunity to practice writing and speaking in front of others many times. There are many similarities between the studies of journalism and law. Professionals in both fields must be detail-oriented, ethical, and able to relay information to others. I know what assets critical thinking, an effective writing style, and strong communication skills are to an attorney..."

Dr. Robin Liston, Music Professor at Baker, states that "Miss Shelton has shown herself to be a devoted and cheerful student...She is always well-prepared and confident, and thoroughly researches her topics...I respect her work ethic and intellectual curiosity, and she provides a model of excellence to her peers. She is approachable and open, someone others trust and admire."

Dr. W. Joe Watson, Professor of Mass Media at Baker, reported that Tricia "secured an internship with KSHB-TV, the NBC affiliate in Kansas City, Missouri. Originally the internship was designed to be a three week effort in which she would assist one of the station's weather anchors. She quickly worked to turn it into more. By the end of her time at Channel 41, she was helping to cover stories in the field and assisting with the undercover unit's investigative reports. This past summer she completed another internship at Channel 6 News in Lawrence. By the end of the first week she was reporting on-air...I believe her desire to combine a passion for television news with law will produce fruitful career opportunities for her."

The following, in alphabetical order, were chosen for the \$1,000 Pi Gamma Mu scholarships:

**Jawaher Ali-Redha** joined PGM while at the American University of Kuwait. She is now matriculating at The University of London working on her degree in Social Anthropology. Jawaher is



Jawaher  
Ali-Redha

one of the first two students to graduate from a university in Kuwait with an anthropology degree. Her goal is to conduct "original research on key contemporary issues and spread awareness about the significance and contribution of the field in Kuwait and the surrounding region where anthropology is cast in a shadow of doubt."

Dr. Conerly Casey of the Department of Anthropology at AUK told us that "Jawaher's enormous energy and passion about the intersections of global and local processes that produce inequities, social marginalization and conflict come, in part, from her experience of the 1990 Iraqi invasion and occupation of Kuwait...In his classes, Jawaher was prepared; she listened carefully, and she was fully engaged in our class discussions...The paper topics and projects Jawaher chose were thoughtful, creative, yet thoroughly tied to current social issues and problems, such as sexuality in Muslim communities, genocide and international conflict resolution...On a personal note, Jawaher is mature, disciplined, thoughtful and flexible, with a good sense of humor. She is energetic and focused, yet able to develop a strong rapport with others very quickly, hence her excellent leadership skills. Jawaher's commitment to others, and to questioning the ideas and practices that create inequity, or contribute to social justice, are indicative of her capacity and drive for professional leadership and service to Kuwait."

**Shelby Buettner** is attending graduate school at the University of Nebraska at Omaha (UNO) working towards a degree in Public Administration. Shelby joined PGM through the Nebraska Epsilon chapter at UNO. She states, "As an avid proponent of the minority populations involved in public policy, I have sought to understand the complex interactions of our government on a domestic and international level...I have sought to heighten my awareness of issues plaguing specific sectors of the world, specifically gender equality and poverty, through a myriad of service learning opportunities. The most gratifying volunteer work that I have participated in has been a four year endeavor at the Stephen Center, a local shelter, where I train new volunteers, conduct intake interviews, and aid residents in essential problem solving...I wish to become a substantial player in the international playing field, seeking to represent women and the United States on a global scale and advocating human rights both domestically and abroad."

Dr. Paul Sather, Director of the Service-Learning Academy at UNO, reports that, "While pursuing her Masters degree in Public Administration Shelby also serves as the president of the American Humanics Student Association...She spearheaded their efforts to organize a fall leadership retreat, led the way in planning and implementing their fall fundraising efforts to raise funds for students to attend the American Humanics Management Institute...Her leadership skills in the American Humanics program were recognized nationally when she was selected to receive a Next Generation Leadership award, the highest honor awarded to American Humanics from across the United States."



Edward  
Carlson

**Edward Carlson** joined PGM at Colorado College's Epsilon chapter where he received his degrees in Political Science and Italian Studies. He is now attending The University of Iowa College of Law. He tells us. "I want to use this degree to help influence statutory law or the legislative law that state legislatures and the national government pass every year...Working as a legislative fellow in Colorado, it amazed me to see how a couple of lines in an amendment could protect an entire class of people from discrimination in the workplace or provide economic stimulus to a community desperately in need of it. This is what makes statutory law so exciting; it has so many possibilities to help people, and with the right care can make a giant impact on their lives."

Dr. Andrew Price-Smith stated that Edward "exhibited an exceptional degree of diligence, coupled with the rather rare qualities of maturity, intellectual curiosity and analytical thinking. Furthermore,

*continued on page 6*



# Pi Gamma Mu

Member of the Association of College Honor Societies

Periodicals Postage  
Paid at Winfield, KS  
and at additional  
mailing offices

## Pi Gamma Mu Newsletter (ISSN 8750-4855)

Edited by Sue Watters, 620/221-3128. e-mail [pgm@sckans.edu](mailto:pgm@sckans.edu), fax 620/221-7124. Published in September, November, January, March and July by **Pi Gamma Mu, 1001 Millington, Suite B, Winfield, KS 67156**. \$20.00 annual subscription price. Periodicals postage paid at Winfield, KS, and at additional mailing offices. POSTMASTER: Send address changes to Pi Gamma Mu, 1001 Millington, Suite B, Winfield, KS 67156.

### SCHOLARSHIP WINNERS ANNOUNCED – *continued from page 6*

I was extremely impressed with his creative thought and analytical acumen in the domain of comparative political theory and its application to praxis...During the period of time that I have known Edward he has displayed great interest in academe, the concepts of social justice and fairness, and their application to political science. He possesses that rare mix of integrity, intellect, and a desire to serve humanity..."

Sandra Hernandez, LCSW, Executive Director of Centro de la Familia, a private agency that serves approximately 1300 Hispanic and Latino families a year said, "Eduardo was an active volunteer beginning in the fall of 2002 through March of 2007. In his first year with us, Eduardo assisted with a group that treated Hispanic men who had been legally charged with domestic violence and were court ordered to attend a psycho-educational offender group which addressed behavior and anger management issues. He also worked with our parenting education program...In October of 2003 he agreed to serve on Centro de la Familia's Board of Directors. Eduardo is highly committed to his endeavors and goals, is reliable and is willing to try new things...In his work with the children..., Eduardo displayed his ability to work well with a younger population, most of whom were also primarily Spanish speaking...;therefore, he was put in the position of relating to individuals who had little to no understanding of a new culture and were experiencing many stresses and challenges related to those issues."

**Sarah Giannetta** joined PGM through the Massachusetts Beta chapter at Regis College. She is now attending the University of Massachusetts at Boston and plans to teach Sociology at the college level. Sarah states, "People can only make a change in their world if they know the need for change exists. I believe sociology is an eye-opener that can change the way people look at the world and provide a better understanding for why things happen."

Sociology Professor, Dr. Kathleen Kautzer, stated, "I am confident that Sarah has the writing and analytical skills, depth of knowledge, intellectual curiosity, and self-discipline necessary to succeed..." Another Sociology Professor, Dr. Alex Liazos, told us, "In all her projects, her research was thorough and imaginative, and her papers and class presentations were clear, concise, well written, and well organized...She is inspired and inspiring, dedicated, responsible, and hard working."

Dr. Sara Chudnovsky Weintraub, Chair of the Department of Communications said, "Sarah is a wonderful individual in every sense of the word. Academically, she is a very strong student...She is a very motivated, self-directed and determined young woman who sets high standards and works tirelessly to achieve them. She is someone who demonstrates the ability to think critically and provides keen insight and a clear understanding of the course content...Sarah also heads the Student Writing Center at the College."

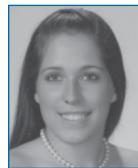
**Kathleen Jones** became a member of PGM while attending Appalachian State University. She is in the Masters of Social Work



*Kathleen Jones*

program there. Kathleen has "always felt the need to help others have a better quality of life." She became a dental hygienist after high school. She eventually went back to college and law school, but she was drawn more toward directly helping children and families. She worked in residential group homes for many years, and then at a local high school helping students to stay in school. She went back to school and received her Bachelor's in Social Work. She told us she is "committed to life long learning and the pursuit of excellence in service to my students and their families. Today's youth are our future and they deserve the best help available to achieve their full potential to contribute constructively to society."

Judith Wesson, Child Welfare Education Coordinator at Appalachian State, remarked that the "strengths of Ms. Jones were her excellent study skills, exceptional grades, eagerness to learn and advance, always doing more than required on academic assignments and in her practice setting, a strong sense of responsibility and follow-through, impeccable attendance and great professionalism...Ms. Jones' ability to express herself to varying levels of persons, plus connect with each is noteworthy. She is very interesting and engaging in conversation, plus able to converse on many subjects."



*Kimberly Kilmartin*

**Kimberly Kilmartin** joined PGM through the Kansas Eta chapter at Baker University. She is now matriculating at the University of Oxford in England working on her Master of Studies in Medieval History. Her plans include becoming a university professor of Medieval History. She tells us that, "My fascination with history and the process of historical discovery is the basis for the majority of my intellectual and academic choices, including my triple undergraduate majors of History, French, and International Studies. Realizing my desire to experience history, I capitalized on an opportunity to travel to China...For two weeks, I was surrounded by historically and culturally significant places...I elected to spend the following spring at the University of Edinburgh, where I solidified my plans to...pursue specialization in the military history of medieval Great Britain."

Dr. John D. Richards, Professor of History at Baker, states, "She is, of course, highly intelligent, diligent about her work, and an excellent writer. Moreover, she possesses exceptional critical thinking skills, a mature sense of sound argumentation, and a clear grasp of the problems associated with historical context...She is one of the most meticulous and organized people I have ever known...In part, her excellence is a product of her care and passion for research and study, but her second virtue, the sincerity of her convictions, gives her a wellspring of energy that I have grown to respect and admire."