



NEWSLETTER

Pi Gamma Mu

International Honor Society in Social Sciences

The mission of Pi Gamma Mu is to encourage and promote excellence in the social sciences and to uphold the ideals of scholarship and service.

Number 165

November 2009

SCHOLARSHIP APPLICATION DEADLINE - JANUARY 30, 2010

Each year, Pi Gamma Mu awards **10 scholarships** to outstanding members. Four are named scholarships, three are worth \$2,000 each, and the other seven are worth \$1,000 each. These scholarships are primarily intended for first-year graduate work in the social sciences. If you are interested in applying, you should start putting your information together right away. Applications must be fully completed and received at the Pi Gamma Mu office in Winfield with a postmark **on or before January 30**. Winners will be notified in March, with the grants awarded in September.

In this issue :

Front Page

SCHOLARSHIP OPPORTUNITIES

CHAPTERS IN ACTION

SCHOLARSHIP WINNERS ANNOUNCED

INTERNATIONAL AFFILIATE MEMBER

GUEST LECTURESHIP GRANTS, 2008-2009

DOES YOUR CHAPTER HAVE A BANNER?

CALL FOR PAPERS

PI GAMMA MU HONOR CORDS

OPPORTUNITY FOR GIVING

SCHOLARSHIP OPPORTUNITIES

There is a wonderful summer research opportunity at the **University of Maryland, College Park** intended for undergraduate students. This program is geared at rising juniors and seniors who are interested in pursuing a doctorate in the social, behavioral and economic sciences immediately following the completion of the bachelor's degree. All students are eligible; however, we highly encourage those from under-represented populations to apply (i.e. African Americans, Hispanics, American Indians, Alaska Natives, Native Hawaiians, or other Pacific Islanders).

They expect 10-12 scholars to participate in the upcoming eight-week experience (from May 31- July 23, 2010). Events and activities will include lab and research experiences, didactic science lectures, and opportunities for professional development, mentoring, and networking. Accepted students will be provided round-trip airfare, meals, room and board, and a \$2,700 stipend. The application deadline is February 12, 2010.

Please refer to their program website at www.bsos.umd.edu/diversity/summer-research-initiative.aspx or email them at sri@bsos.umd.edu for more information.

The **University of Miami** is sponsoring a National Science Foundation Social, Behavioral & Economic Summer Research Experience. The program will run from May 19 to July 23, 2010. We are accepting applications until March 15, 2010.

The programs being offered are: psychology, counseling psychology, sociology, economics, and international studies. The sponsors are especially seeking a diverse pool of underrepresented minority students who are U.S. citizens or permanent residents.

This is a terrific opportunity for rising juniors and seniors to conduct research, analyze data, and gain presentation experience. All students participating will receive a full scholarship, a stipend and on-campus living and travel expenses. Students are more than welcome to fax the application to the Graduate School at 305-284-5441. For questions, please contact Bryan Jones, 305-284-4154. The website is www.miami.edu/grad/summerresearch.

Graduating college seniors and recent college graduates (Class of 2007 or later) should check into **City Hall Fellows'** exciting and prestigious public service Fellowship program.

City Hall Fellows is a non-partisan nonprofit training program for the next generation of leaders of America's cities. The 12-month, paid, post-college Fellowship integrates hands-on experience working within the highest levels of local government with intensive training in how cities work. For the class of 2011, they will be placing cohorts of Fellows in 3 cities:

- **Houston, Texas**
- **San Francisco, California**
- **Baton Rouge, Louisiana**

The Fellowship is open to students of ALL majors. A detailed overview of the Fellowship opportunity, as well as application materials and instructions, are on their website, www.cityhallfellows.org. Applications for the Class of 2011 are due **March 10, 2010**. The Fellowship year begins August 2, 2010 and runs through July 29, 2011.

The program's staff, Fellows and alumni will be visiting campuses around the country over the next two months. They also will be hosting several free, live webinars for students at campuses they are unable to visit in person. All of these are posted on [our schedule of events](#) (which is frequently updated). For more information, contact Bethany Henderson, founder and executive Director, City Hall Fellows, bethany@cityhallfellows.org or www.cityhallfellows.org

CHAPTERS IN ACTION

At **Washington and Jefferson College**, the Pennsylvania Alpha Omicron chapter held a lecture as a joint event with the psychology department. The speaker was Dr. Eric Hickey, a social psychologist who has published in the field of criminal psychology and is internationally recognized as an expert in the field. He is Systemwide Director of Alliant International School for Forensic Studies. He has appeared in the national media including CNN, NPR, ABC's 20/20, A&E and ABC's Good Morning America.

The Nebraska Delta chapter at **Wayne State College** co-sponsored the Festival of Trees, a campus-wide holiday season fundraiser founded by the chapter in 2004. Organizations from across campus were invited to decorate and display "themed" trees in the WSC Student Center. Passersby "voted" for their favorite tree by donating money to each organization's tree bucket. The participating organizations used the donations for gift purchases requested by local families in need. Members then delivered gifts to the families. Almost \$800 in gifts were delivered to area families.

The Massachusetts Delta chapter at **Wheelock College** had a very busy year. They were active in a number of social service projects throughout the year including the Second Annual Charity Yard Sale on campus. Last year's money went to the international nonprofit Invisible Children (to help protect Ugandan children living amidst civil unrest and child trafficking). This year they chose to sponsor Bridge Over Troubled Waters (BOTW). It is the only agency in the Boston area to provide a continuum of age appropriate services to approximately 2,433 at-risk and homeless youth. It offers services involving health, education, career development and housing issues. The left over yard sale items were donated to Rosie's Place, a sanctuary for poor and homeless women who offer long-term assistance and emergency help for women and children.

In December the chapter collected food for the Greater Boston Food Bank, and then spent the day volunteering at the Food Bank. Its members spent one day in December making blankets for Christmas gifts.



Massachusetts Delta members making blankets



Massachusetts Delta chapter members at the bus stop after volunteering at the Food Bank

The Nebraska Epsilon chapter at **University of Nebraska-Omaha** gathered materials for a local low-income housing facility occupied mostly by recent refugees from Sudan. Its members gathered a substantial quantity of household supplies, personal care items, childcare items, and school supplies. One member even donated a slightly used computer.

SCHOLARSHIP WINNERS ANNOUNCED

After much deliberation on the part of the Scholarship Committee, Chairman Dr. Charles McClellan recommended the following scholarship winners to the Board of Trustees. Each of these candidates has met the expectations of the trustees who are pleased to award the scholarships to:

The Marvel Stockwell Scholarship was given to **Jonathan Eaton**. Eaton graduated from Valparaiso University where he joined the Indiana Epsilon chapter. He is now in Albania attending the University of New York-Tirana. He is working toward a Ph.D. in Sociocultural Anthropology. During his junior and senior year at Valparaiso, he worked at the Valparaiso University Brauer Museum of Art, the Fitzwilliam Museum in Cambridge, England and the Cooper-Hewes National Design Museum in New York City.



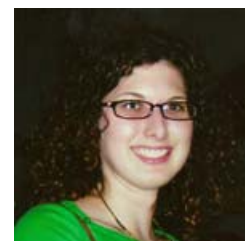
Eaton stated, "Through my research, I intend to examine how the act of preservation complicates and challenges definitions of cultural identity in Albania and other developing post-communist societies in Eastern Europe, such as the Republic of Macedonia, Croatia, Bulgaria and Romania, by studying the ways in which museums and other cultural heritage institutions both influence and are affected by a country's national identity. My objective is to investigate the correlation between how nations preserve their cultural heritage and how recent political, social and economic changes affect trends in cultural heritage preservation and in turn, influence perceptions of national identity."



Shari Dade is the recipient of the \$2,000 **Effie Urquhart Scholarship**. Dade is attending the University of Minnesota working on her Master's Degree in Educational Psychology. She joined the Louisiana Eta chapter of Pi Gamma Mu while attending Grambling University. She told us, "During high school I was introduced to psychology and sociology in a class I took...I soon found myself becoming more interested in studying human behaviors. I did not know that this interest would eventually turn into a passion for psychology...I wish to have a positive influence on the lives of others."

According to Dr. Frances Staten, sponsor of the Louisiana Eta chapter, "Ms. Dade has distinctively earned the reputation of being [a] very intelligent, dedicated, organized, motivated, and hardworking student...These attributes are quite evident in her achievement of such honors as: National Merit's Scholar, National Dean's List, *Who's Who Among Students in American Universities & Colleges*...and being a NIMH-COR Scholar."

Winner of the \$2,000 **Carroll Parish Scholarship** is **Andrea Gouin** from the Wisconsin Gamma chapter at St. Norbert College. She is now matriculating at Marquette University in its Graduate Professional Studies program. Gouin has spent two years of service with AmeriCorps. Graduate school will fully utilize her skills and allow her to become a more effective agent of change, Gouin explained.



According to her academic advisor, Dr. Cheryl Carpenter-Siegel, "Ms. Gouin is a smart, ambitious, and disciplined young scholar. Through a combination of entering St. Norbert with a college course completed, taking courses while holding down full-time summer jobs, and taking an overload of courses for three semesters, she completed her undergraduate degree in Sociology with a minor in American Studies in three years, including a semester of study in Ireland and an internship. She graduated magna cum laude."



The **Dan Quigley Law Scholarship**, which honors the memory of Pi Gamma Mu's long-time corporate attorney, is given to **Raul Bernal**. Bernal is a member of the New Hampshire Alpha chapter at New Hampshire University. He is now matriculating at The Fletcher School of Law and Diplomacy at Tufts University. He plans to have a career as a Foreign Service Officer.

Bernal stated, "America is an example to the world that democracy is indeed the greatest force for change, and that our values and ideals are not only relevant, but can also still serve as a model to others. Although my graduate studies will focus on international organizations and international conflict resolution, I believe the nature of today's problems cannot be defined by a single course of study; rather, they require an interdisciplinary approach to help solve them."

The following were chosen for the \$1,000 Pi Gamma Mu scholarships:



Mark Bender joined Pi Gamma Mu at the Pennsylvania Alpha Omicron chapter at Washington & Jefferson College. He is now working toward his Ph.D. degree in Economics at the University of Pittsburgh. He is particularly interested in human decision making, and plans to teach at the college level.

According to Dr. Tiffani Gottschall, associate professor of economics at Washington & Jefferson, "Mark Bender has tremendous potential as both a teacher and scholar. He volunteers in Big Brothers/Big Sisters and coaches a youth lacrosse team." She remarked that Mark "has taught personal economics to eighth grade students and assisted teachers in high school government classes and in a learning support classroom...Mark Bender has a genuine interest and curiosity for learning."

Christopher Crawford is attending George Washington University Law School. Crawford joined Pi Gamma Mu at Franklin & Marshall College's Pennsylvania Mu chapter. Crawford stated "The study of the basis upon which our entire society is based appealed to me greatly as both an intellectual goal and a serious career."



The chair of the Department of Classics at Franklin & Marshall, Shawn O'Bryhim, said, "I have absolutely no doubt but that Chris will succeed in his chosen profession. He is diligent, responsible, creative, and even-tempered, and has great talent in several different areas. I am certain that he could have had a successful career in music, classics, or history, all of which he loves equally. The fact that he has chosen Law is testimony to his dedication to the field."



Elizabeth Danley joined the North Carolina Epsilon chapter while attending Appalachian State University. She is now in the Social Work program at Georgia State University. Danley said, "I hope to take this background in social work internationally and aid people throughout the continent of Africa with their physical, mental, and emotional needs. I primarily want to focus on the need for better health education, like AIDS/HIV prevention and better nutrition. After spending some time at the international level [she went to South Africa last summer with a study abroad program], I want to pursue a doctorate in health psychology, a field that is relatively new to the discipline." She also reported that "with many health issues arising in our country, like obesity, substance abuse, and lack of access for many people to proper healthcare, I believe that there is a need for more professionals to work towards new research on ways to tackle these concerns."

Delbra Thomas, program director at Gilgal Inc., a residential program for homeless women with addictions where Danley is a student intern, states that "she always presents herself as a professional, always dependable, punctual, always eager to learn, and very cooperative."

Nathan Dunlap is now attending the University of Chicago and is preparing for a career as a public policy analyst. He joined Pi Gamma Mu through the Illinois Xi chapter at Elmhurst College.



According to Professor Thomas Nachtrab, "Nathan freely and effectively initiates interaction with *people*. He loves to understand people, especially those whose traditions and life experiences differ from his own. He engages others with ease, and gains their trust with his open, empathetic manner. In addition to his interest in individuals, Nathan has an extraordinary intellectual curiosity about collectives of people. He is fascinated by the actions and interactions of political, economic, social, and civic groups and institutions."



Jennifer Johnson graduated from Wayne State College where she joined the Nebraska Delta chapter of Pi Gamma Mu. She is now attending Portland State University. She would like to receive her Ph.D. in Sociology and conduct research in the field of social demography. Johnson said, "Sociology has ignited a strong desire to combine my interests in statistics, computers and inequalities and further develop my understanding of sociology."

Dr. Jean Karlen, Professor of Sociology and co-sponsor of the Nebraska Delta chapter, remarked that "Jen is an intelligent, talented, and responsible young woman. This young woman is a leader both in and out of the class. She is one of those students who "step up" and responds to requests, queries, and/or tasks that need to be done. Her work as President for our campus Sociology/Psychology Club and as secretary for the campus chapter of Habitat for Humanity attests to her organizational and leadership skills and her commitment to community service."

Leasha Strang joined Pi Gamma Mu through the Kansas Epsilon chapter at Kansas Wesleyan University. She is matriculating at Newman University and should have her master of social work degree in 2011. Strang received her bachelor's degree while working full-time and raising her children as a single parent. Strang reported that her "future career goal is to work as a therapist with mentally ill adults to help them manage their symptoms and live productive lives."

Professor Tor Wynn, chapter sponsor at Kansas Wesleyan University, stated, "Because of her academic, social, and leadership skills, penchant for hard work, and her professional attitude, I believe that Leasha Strang has a bright future in the Social Work field."



INTERNATIONAL AFFILIATE MEMBER

The Board of Trustees has established a new category of membership in Pi Gamma Mu – the **International Affiliate Membership**. Please think about the foreign students and visiting faculty on your campus that might fit into this category, and consider the benefits of choosing them for this special membership.

The purposes of International Affiliate Membership are to associate foreign visitors with Pi Gamma Mu, individuals who generally are not eligible for full membership because of their brief tenure on a campus; to encourage the international dimension of Pi Gamma Mu by bringing into greater contact with PGM our foreign guests, to enable them to provide information to colleagues abroad about Pi Gamma Mu; and, to become a nucleus for foreign chapter development. Therefore the membership criteria are broadly cast.

Criteria for membership: Students, faculty, administrators, and distinguished guests from other nations who have an interest in the social sciences.

Benefits:

1. A certificate issued by International Headquarters in recognition of International Affiliate Member status (not the full membership certificate).
2. A Pi Gamma Mu key.
3. A one-year subscription to the *International Social Science Review*.
4. The privilege of participating in local chapter activities, except for serving as an officer.

Cost: \$20 to be sent by the chapter to International Headquarters to cover the expenses of the publications, mailings, and key.

GUEST LECTURESHIP GRANTS, 2008-2009

		Grant	Attendance
Nov. 13	North Georgia College & State University Honorable Cathy Cox, president of Young Harris College "Georgia's First-Ever Female Secretary of State Discusses the 2008 Election in Which the First-Ever Black or Woman Candidate was Elected President or Vice-President of the United States"	\$300	60
Feb. 14	Grambling State University Dr. V. T. Samuel, Professor of Social Work at Rust College, and co-founder of the Black Empowerment Apprenticeship Program (BEAP) Dr. Farrah Gafford, professor of quantitative research methods, Xavier University "Fulfilling the Ideals of Pi Gamma Mu via Service and Research"	\$300	60
Feb. 16	Huston Tillotson University Dr. Tina Quartaroli, president of Future Age Consulting, Inc. Dr. Quartaroli is a sociologist who specializes in the needs of the aging population "Social Gerontology and the Built Environment"	\$300	120
May 1	Kent State University Dr. David Maume, professor of sociology, University of Cincinnati and Director of the Kunz Center for the Study of Work and Family "The Changing Rhythms of Family Life in the 24/7 Economy"	\$300	50

Total Attendance 290
Total Grants \$1,200

Last Year's Total Attendance 915
Last Year's Grants \$2,100

DOES YOUR CHAPTER HAVE A BANNER ?

Our Pi Gamma Mu banners have been very popular, and we have had to reorder more. These banners are great to use at your initiation ceremonies, and you can display them in a prominent spot to advertise your chapter. The banners are made of two thicknesses of heavy royal blue nylon with white fringe on the top and bottom, a white cord and tassels with which to hang the banners, and our key pin design screen printed in white. The banners come with a gold rod through the top. They are ready to hang on a wall, or over a podium. The new banners are 2 feet by 3 feet in size. The price is \$75, so order one for your chapter soon.

The order form is available on the [Merchandise Page](#).



PI GAMMA MU HONOR CORDS



For those of you graduating this year, there are honor cords available at the Pi Gamma Mu office. You can proudly wear these attractive royal blue and white cords at your graduation. The price of the cords is \$15.00 each plus \$2.95 for shipping and handling. It is quite an honor to be a member of Pi Gamma Mu International Honor Society and honor cords are our most popular item.

Please plan ahead and order your honor cords early. Send your check and return mailing address to headquarters or call (620-221-3128) to give us a credit/debit card number. [Merchandise page Order Form](#).

OTHER PI GAMMA MU ITEMS AVAILABLE TO MEMBERS

Headquarters is selling the royal blue Pi Gamma Mu sweatshirts in sizes M, L, XL, and XXL for \$35.00. We have navy blue polo shirts, embroidered with the Pi Gamma Mu key in white, which are always a popular item. We have them in sizes M, L, XL, and XXL for \$35.00. You can order your honor cords any time during the year. They can be worn at graduation, draped around your Pi Gamma Mu membership certificate on the wall, be creative – but be sure to order yours.



OPPORTUNITY FOR GIVING

Pi Gamma Mu is a 501(c)(3) nonprofit corporation and able to accept tax-deductible donations. If you would like to make a donation to our organization in honor / memory of a professor, sponsor, loved one or friend, or to support our scholarship program, you are encouraged to do so. Pi Gamma Mu gives 10 scholarships to students going into a graduate program in social science each year. You can mail your donation to Pi Gamma Mu, 1001 Millington, Suite B, Winfield, KS 67156.

©2009 Pi Gamma Mu

Pi Gamma Mu Newsletter is available online at <http://www.PiGammaMu.org/newsletter.html>