



NEWSLETTER

Pi Gamma Mu

International Honor Society in Social Sciences

The mission of Pi Gamma Mu® is to encourage and promote excellence in the social sciences and to uphold the ideals of scholarship and service.

Number 195

November 2013

2013 SCHOLARSHIP WINNERS ANNOUNCED

After much deliberation on the part of the Scholarship Committee, the committee's chairman, Dr. Clara Small, recommended 10 scholarship winners to the Board of Trustees. The board awarded scholarships to the following: **Lynette Hess, Hannah Seward, Natasha Williams, Savannah Bell, Sara Bauer, Paul Bissember, Devin Bond, Christina Marko, Heather Martin, Shanta Pamphile.**



NEWSLETTER E-MAIL LISTSERV SUBSCRIPTIONS

Members who receive the *Pi Gamma Mu Newsletter* by E-mail are subscribed to the PIGAMMAMU-L listserv based at the University of Georgia.

Visit <http://www.listserv.uga.edu/cgi-bin/wa?SUBED1=pigammamu-I&A=1> to subscribe or unsubscribe to the Pi Gamma Mu listserv, and follow the instructions to leave or join the list. A confirmation will be sent to the e-mail address you enter, and you must respond to the confirmation within 48 hours.

CHANGE OF ADDRESS

Anytime you move, such as **after graduation**, please notify the Pi Gamma Mu office immediately. This will prevent your mailings from being interrupted or discontinued. The *International Social Science Review* is returned to us by the post office, which is an additional expense for the international office to absorb. Just mail a change-of-address card, post card, or letter to Pi Gamma Mu, 1001 Millington St., Suite B, Winfield, KS 67156. If you prefer, you can send an E-mail message (executivedirector@pigammamu.org), or go to our Web site (www.pigammamu.org) to change your address information. We need your name, as well as your old and new address. Thank you very much for taking a few minutes to keep your information current.

Mailing address: Pi Gamma Mu, 1001 Millington St., Suite B, Winfield, KS 67156.

In This Issue:

APPLICATIONS FOR 2014 GRADUATE SCHOLARSHIPS DUE ON FEB. 15

2013 SCHOLARSHIP WINNERS ANNOUNCED

PI GAMMA MU'S NEW EXECUTIVE DIRECTOR IS NANCY WIEBE

CANDICE QUINN BECOMES EDITOR OF THE *ISSR*

VIEW FROM THE PODIUM: Making Our Mark

SHADOW PRESIDENT UPDATE: Obama and USA fall from top spot

DEAN J. FAFOUTIS RECOGNIZED FOR 11 YEARS AS *ISSR* EDITOR

CHAPTERS IN ACTION

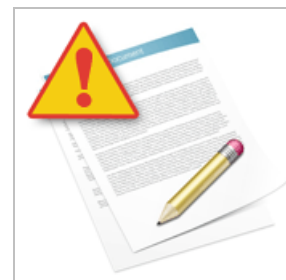
ASSOCIATION OF COLLEGE HONOR SOCIETIES

DONOR RECOGNITION

IDEALS OF PI GAMMA MU

APPLICATIONS FOR 2014 GRADUATE SCHOLARSHIPS DUE ON FEB. 15

Each year, Pi Gamma Mu awards 11 scholarships to outstanding members. Five are named scholarships. Three scholarships are worth \$2000 each, and the other eight are worth \$1000 each. These scholarships are primarily intended for first-year graduate work in the social sciences. If you are interested in applying, you should start putting your information together right away. Applications must be fully completed and received at the Pi Gamma Mu office in Winfield, Kans., with a postmark on or before February 15. Winners will be notified in March, with the grants awarded in September. Please check the Pi Gamma Mu Web site for information and the application form. The URL address is www.pigammamu.org/scholarship_application.asp



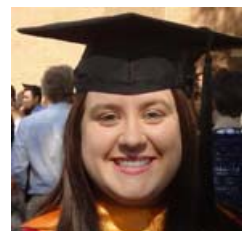
2013 SCHOLARSHIP WINNERS ANNOUNCED

After much deliberation on the part of the Scholarship Committee, the committee's chairman, Dr. Clara Small, recommended 10 scholarship winners to the Board of Trustees. The board awarded scholarships to the following:



The **Marvel Stockwell Scholarship** of \$2000 was given to **Lynette Hess**. She graduated from Brewton-Parker College where she joined the Georgia Xi chapter. She is now enrolled in the School of Psychology & Counseling at Regent University, at which she is working towards an M.A. degree with a major in marriage, couple, and family counseling. Hess said, "I want to work with families about interacting with others and encouraging the marriage relationship to be healthy and strong." She is passionate about working with children and people, and will be a positive influence on marriages and ultimately families within her community.

Hannah Seward is the recipient of the \$2000 **Carroll Parrish Scholarship**. She is a member of the Maryland Gamma chapter at Salisbury University. She is now attending Virginia Commonwealth University and plans to receive an M.S. degree in sociology. She stated, "I love doing research and uncovering the way our society works." She also is very passionate about sociology of education, primarily inequalities throughout public schools. After she receives her master's degree, she plans on earning a doctorate and teaching sociology at the college level.



The winner of the \$2000 **Effie Urquhart Scholarship** is **Natasha Williams**. She joined the Florida Zeta chapter at Florida State University. She is now attending Purdue University, at which she is working towards an M.S. degree in child development and family studies. Williams stated, "I have an understanding of the workings of the human mind and view families as an intricate system of individuals. I am aware of the macro-level issues that affect the family system." She would like to open a private practice and provide couple and family services.

The **Gordon Mercer Scholarship** of \$1000 was given to **Savannah Bell**. She joined the North Carolina Lambda chapter at Western Carolina University. She is now in the graduate program in public affairs at Western Carolina University. She plans on pursuing a career in law enforcement, particularly the FBI. Bell stated, "Serving the community and the country is important, and one of the best ways to do that is by keeping the peace and making sure everyone is safe." She also stated, "I would like to learn more about nonprofit organizations so I can start and maintain a nonprofit organization for trafficking victims."



The following, in alphabetical order, were chosen for the \$1000 Pi Gamma Mu scholarships:



Sara Bauer joined Pi Gamma Mu through the New York Phi chapter at Nazareth College. She is now attending Tufts University, at which she is seeking a master's degree in economics. She stated, "My future plans are to work for the U. S. Bureau of Labor Statistics as an analyst and write reports that could influence future policies." She added, "I like to help people, especially those who have not enjoyed good fortune." Bauer also stated that she has experience with the statistical program STATA. She learned how to input data and analyze them through STATA.

Paul Bissember joined the New York Alpha Gamma chapter at Siena College. He is seeking an M.A. degree in Latin American studies at the University of California at Berkeley. Bissember stated, "I have a great deal of experience working, living, and traveling in Latin America. I became interested in Latin American studies while taking a political-science course titled 'Latin American Social Movements' at Siena College." Bissember stated that, after he completes his master's degree, he plans to pursue a doctoral degree in sociology.



Devin Bond joined the Missouri Kappa chapter at Central Methodist University. She is attending the Forest Institute of Professional Psychology. Bond has observed mental illness in adults and the effect it has on children. This has fired her passion to have a career in the field of psychology. She stated, "It is my greatest desire to work with people with psychiatric disabilities, families, public decision makers, and communities to transform individuals and attitudes to one of hope and awareness."

Christina Marko joined Pi Gamma Mu through the South Carolina Gamma chapter at Winthrop University. She is seeking a master's degree in social work at Winthrop University. Marko stated, "The reason I chose social work is because it places a strong sense of value on each individual person and her worth as a human being. Social work is a respectful, compassionate, and realistic field that is all about helping people when they are down and bringing them up so they can help themselves." She has a passion for helping people and plans on being the best social worker she can be.



Heather Martin joined the Massachusetts Epsilon chapter at Springfield College. She is seeking a master's degree in organizational management and leadership at Springfield College. Through her own experiences she believes that she can emulate the message that it is never too late to fulfill one's dreams. She stated, "My goal is to work in human services specializing in addictions." She added, "I firmly believe that to provide more effective and evidenced-based treatment theaters for individuals suffering with addictions, future workers need to be better equipped to negotiate the new and ever changing and complex healthcare and regulatory environments."

Shanta Pamphile joined the Louisiana Eta chapter at Grambling State University. She is seeking a master's degree in clinical mental health counseling at Fairleigh Dickinson University. She plans on pursuing studies related to the underlying mechanisms of psychological disorders as well as intervention techniques for improving the lives of persons who suffer from many disabling mental illnesses in addition to persons who experience maladies with life's difficulties. Pamphile stated, "My greatest interest is in creating awareness in communities that have been alienated from society, paying considerable attention to rural areas." Additionally, she would like to emphasize service to people of color, women, and members of other minority groups and to help break discrimination barriers that plague the fabric of our society.



PI GAMMA MU'S NEW EXECUTIVE DIRECTOR IS NANCY WIEBE



During a meeting in Springfield, Mo., on October 17-19, Pi Gamma Mu's international Board of Trustees appointed Nancy T. Wiebe, grant-development manager of United Methodist Youthville, Inc., in Wichita, Kans., since 2007, to become the honor society's international executive director. Wiebe's appointment is effective on January 1.

Wiebe has extensive experience as a manager in the nonprofit and public sectors. Among other appointments, she has been assistant director of the Kansas Child Abuse Prevention Council; director of the AIDS Fund of Wichita/Sedgwick County; senior coordinator of community partnerships for the University of Kansas School of Medicine in Wichita; and director of allocations of United Way of the Plains, also in Wichita.

Wiebe earned a B.S. degree from the University of Kansas (KU) School of Journalism and an M.B.A. degree from KU's School of Business. She was initiated as a member of the Beta Gamma Sigma honor society for business. She also earned a certificate in nonprofit management from Wichita State University's Center for Management and Development.

She is a past president and member of the Wichita Professional Communicators and a member of the Kansas Professional Grant Association, the Wichita Independent Business Association, and the Wichita Women's Leadership Alliance.

Pi Gamma Mu's Personnel Committee, chaired by student trustee Amanda M. Wolcott, and the Board of Trustees interviewed three outstanding finalists for the executive-director position at the Springfield meeting. In her application, Wiebe wrote to the Personnel Committee, "I am a great believer in teamwork and very much agree with the 'Power With' leadership style and [the board's] enlightened personnel-management philosophy." Wiebe will be responsible for a variety of functions of Pi Gamma Mu, including leadership of the board's initiative to emphasize ethics and inclusive decision-making.

Since the retirement of executive director Sue Watters on April 30, Beth Biddle has been acting executive director. The board recently promoted Biddle, the honor society's long-time office manager, to the rank of associate director for chapter services. Wiebe will join Biddle and chapter-development officer Angela Shear in the organization's international office in Winfield, Kans., on January 1.

CANDICE QUINN BECOMES EDITOR OF THE *ISSR*

During its meeting in October, Pi Gamma Mu's international Board of Trustees confirmed the appointment of Dr. Candice Quinn to succeed Dean J. Fafoutis as editor of the honor society's scholarly journal, the *International Social Science Review*. Dr. Quinn was nominated by the Communications Committee, chaired by Dr. Susan Kinsella, chancellor of our Southeast Region.

A native of Quebec City in Canada's province of Quebec, Dr. Quinn earned a B.A. degree in British, Irish, and Canadian history from McGill University in Montreal, Quebec, and an M.A. degree in journalism and a Ph.D. degree in history from Marquette University in Milwaukee, Wisc. In her Ph.D. studies, she concentrated in twentieth-century American history, European history since 1648, and the history of Africa.

Dr. Quinn is the director of communications and campus outreach for the Minnesota Arms Spending Alternative Project (MN ASAP) in Minneapolis. MN ASAP disseminates proposals about military-budget decisions by the U. S. government. She is also a member of the board of the St. Anthony Village Historical Society, for which she is overseeing a grant to transcribe the birth and death records and meeting minutes for the town of St. Anthony, Minn., and to place the information on the Internet.

Dr. Quinn has written numerous entries for academic encyclopedias. Her chapter about the history of immigration in Minnesota is being prepared for publication, and she is writing a chapter for another book about Sherlock Holmes as a feminist figure.

Dr. Quinn said, "It is a thrill to be appointed editor of the *International Social Science Review*. I was drawn to the journal by the wide range of interesting topics from a variety of social-science fields. I am committed to maintaining the journal's high standards and to taking it to a digital format, which will provide access to a much larger audience."

The new editor invites submissions of manuscripts from professors, students, and others. "Please feel free to send me an outline of a paper," she adds. "I can let you know whether the topic is something in which we might be interested." Dr. Quinn also welcomes messages from individuals who are willing to referee manuscripts. Such messages should be accompanied by a résumé and the volunteer's contact information. Dr. Quinn's E-mail address is Quinn.issr@gmail.com.

More information about the *ISSR* appears on Pi Gamma Mu's Web site, on a Web page that can be accessed at <http://www.pigammamu.org/international-social-science-review.html>.



VIEW FROM THE PODIUM

Making Our Mark



All of us understand why one locks the doors of her automobile after parking it in a lot, why one locks the doors of his home when he goes to work, why one stores a diamond ring that she doesn't wear in a safe-deposit box, and so forth. A more esoteric matter is what one might do to protect what we call "intellectual property." The content of this column is, in fact, my intellectual property. I might not want you to profit from the content of this column, just as I don't want you to profit from the gold bars that I store in my garage. (Alas, there really aren't any gold bars in my garage. In my garage, I actually store boxes containing that much more of my intellectual property, like the research papers that I wrote when I was in graduate school.) The challenge with protecting intellectual property is that, quite unlike the gold bars, I deliberately offer my intellectual property to the public, as when I present it in this newsletter. Then, I essentially want to take it back, so that nobody will reprint it someplace else without my permission.

The U. S. Constitution acknowledges a person's right to profit from her intellectual property. Article I, Section 8, Clause 8 empowers the U. S. Congress "to promote the Progress of Science and useful Arts, by securing for limited Times to Authors and Inventors the exclusive Right to their respective Writings and Discoveries." This constitutional provision is the basis for the national government's issuance of patents, copyrights, trademarks, and service marks. Intellectual property can be extremely valuable. Warner/Chappell Music, Inc., a division of the Warner Music Group, currently owns the copyright to the familiar song "Happy Birthday to You," and collects a royalty for every public performance of it. In any given year, the royalties add up to a few million dollars. Two years ago, *Forbes* magazine said that the most valuable trademark is Google's. *Forbes* reported the value of the trademark to be \$44.3 *billion*. Some sources now suggest that the value of the trademark of computer maker Apple, Inc., has surpassed that of Google.

Pi Gamma Mu wants our brand to be protected as our intellectual property, too. Accordingly, on November 16, 2012, we submitted an application to the U. S. Patent and Trademark Office (USPTO), a component of the Department of Commerce, for a service mark covering our name and logo. The USPTO officially registered our service mark on November 19, 2013, after a multi-step process that was facilitated by one of the USPTO's examining attorneys, Michele-Lynn Swain, whose service to our honor society (as well as to the rest of the public) we gratefully acknowledge. Our U. S. Registration Number is 4,435,110.

Several versions of our "visual identity" appear on Pi Gamma Mu's Web site. We have a "Graphics" Web page at <http://www.pigammamu.org/graphics.html>. Our policy on the use of our name and logo appears on that Web page. It says:

The name and graphics of Pi Gamma Mu, the International Honor Society in Social Sciences, are protected by a service mark (SM). The U. S. Patent and Trademark Office issued the service mark (U. S. Registration Number 4,435,110) on November 19, 2013. No entity other than Pi Gamma Mu and its chapters may use Pi Gamma Mu's name and graphics without the express written permission of the international executive director. Lifetime members of Pi Gamma Mu are authorized to use the Pi Gamma Mu name for the purpose of identifying their affiliation with the honor society.

As the statement suggests, we do not want to inhibit our chapters and members from using our name and logo for legitimate purposes. Others will just have to come across with a royalty payment, and, as you can undoubtedly imagine, Pi Gamma Mu's intellectual property doesn't come cheap. It may not be worth \$44.3 billion *now*. But just remember that John D. Rockefeller started out as a 50-cents-a-day bookkeeper, and the rest, as they say, is history.

Barry D. Friedman

International President – Pi Gamma Mu®

SHADOW PRESIDENT UPDATE

Obama and USA Fall From Top Spot

President Barack Obama could not bring the congressional leadership in Washington, D. C., together to prevent a government shutdown. The government did, in fact, shut down, and the country--not to mention Congress and the two political parties--was negatively impacted. Meanwhile, Russian President Vladimir Putin eclipsed President Obama as the world's most powerful man on the *Forbes* List. To some it may be shocking, yet Mr. Putin took the spotlight from Mr. Obama and the United States, and had the world questioning U. S. world eminence when the Russian president was able to steer the situation of Syria's chemical-weapons violations to his and Russia's advantage. President Obama's lack of definitive leadership stance and his rescinding of the declaration of military action against Syria for weapons violations opened the door for Mr. Putin to outmaneuver President Obama and prevent a change in the regime of one of Russia's key allies. China was a major critic of the Obama administration's indecisiveness and did not think it sent a good message to the world relative to U. S. leadership globally. There is no disputing the larger size of the U. S. economy and military, yet Mr. Obama as a leader has been weakened politically by his indecisiveness on Syria.



ObamaCare has proven to be one big quagmire and misstep that has impacted millions of people. Critics of the roll out of the healthcare plan point out that President Obama promised an administration of transparency and progressiveness, yet his state-run Web sites and his choice of government contractors who secured the lucrative contract to build the exchanges speak to cronyism, authoritarianism, and secrecy. Opponents of the policy insist that Healthcare.gov is not needed, and that there is no need for state-run websites. The Obama administration insists that exchanges are necessary because they protect the privacy and enrollment information of applicants, yet there are other federal agencies that transmit personal information to private companies. During the first few days of the plan's roll out, only 248 people successfully signed up for health insurance according to a U. S. House of Representative committee report. The Obama administration has brought in experts to fix the problem.

President Obama signed a bill ending the 16-day partial government shutdown after some fierce political infighting. The entire nation became more disillusioned with the political leadership. Mr. Obama pledged to represent change in Washington, yet it seems as if his leadership style has been polarizing. Hopefully, going forward, he can be the uniter that he promised to be.

Dr. Matthew Anderson
Shadow President

DEAN J. FAFOUTIS RECOGNIZED FOR 11 YEARS AS *ISSR* EDITOR

Dean J. Fafoutis, editor of Pi Gamma Mu's journal, the *International Social Science Review*, from 2002 until last month, has been elected to the Pi Gamma Mu Hall of Fame. The international Board of Trustees elected Fafoutis during its meeting on October 17-19.

Fafoutis is a native of New York City. He studied chemical engineering at the Polytechnic Institute of New York and transferred to the City College of New York, from which he received a B.A. degree in history. He also earned an M.A. degree in history from the University of Arizona and completed doctoral coursework at Indiana University in Bloomington. His area of specialization is the history of U. S. foreign relations.



Fafoutis has been a lecturer in history at Salisbury University in Salisbury, Md., for the past 20 years. Previously, he was an associate instructor of history at Arizona and a grader and associate instructor of history at Indiana, where he taught U. S.-history survey courses and electives in diplomatic and military history for nine years. Fafoutis was elected to membership in Pi Gamma Mu by the chapter at Salisbury.

Fafoutis called his service as the *ISSR's* editor "very rewarding." He said that he enjoyed the opportunity to promote Pi Gamma Mu's ideal of scholarship, one of the honor society's seven ideals. Fafoutis added that he always appreciated the ability to give young faculty members a boost up the academic ladder by publishing their work, as well as to help talented students achieve their educational objectives. He expressed gratitude to the many referees who offered their expertise to the peer-review process during his 11 years as editor.

Barry D. Friedman, Pi Gamma Mu's international president, was the journal's book-review editor during Fafoutis's first six years as editor. "I developed a deep admiration for Dean's remarkable skill as a writer and editor," he said. "I was always so impressed by his insight as he identified ways to convey information in book reviews more clearly and completely." Friedman noted that, in recent months, the Board of Trustees has voted to designate Fafoutis as the journal's editor emeritus, and has now expressed its appreciation to him additionally by electing him to the Hall of Fame. Pi Gamma Mu's international second vice president, Dr. Clara Small, long-time faculty advisor of our chapter at Salisbury University, and the chapter's co-advisor, Dr. G. Ray Thompson, conducted a ceremony at Salisbury on November 18 during which they awarded to Fafoutis his Hall of Fame honoree plaque.

The complete list of members of the Pi Gamma Mu Hall of Fame appears on the Web page at www.pigammamu.org/hall-of-fame/index.html.

CHAPTERS IN ACTION

The **Kansas Alpha** chapter at Southwestern College held a ghost tour of Winfield on October 28 and 30, 2013. The October 28 tour was a walking tour, whose starting point was outside of Pi Gamma Mu's international office. The October 30 tour was a shuttle tour that started at 1500 East Eighth Avenue. The chapter reports that all participants had a lot of fun.

The **New York Tau** chapter at Pace University held an initiation ceremony for new members on October 22, 2013. The chapter installed its 2013-2014 officers during the assembly. The chapter sponsor, Dr. Linda Quest, presented two scholarship medals to New York Tau mentor Dr. Edward Tseng. The originals had been misplaced. She reported, "Dr. Tseng was surprised and delighted with the replaced scholar medals."

DONOR RECOGNITION

While Pi Gamma Mu is not the largest or wealthiest of the 68 national and international honor societies affiliated with the national Association of College Honor Societies (ACHS), arguably our international officers and trustees and our chapter sponsors are the hardest-working volunteers who can be found in any of the societies.

Please, would you consider being one of our tenacious partners? We gratefully accept donations of any size. Donations of \$25 or more are acknowledged both on our Web site and in the *Pi Gamma Mu Newsletter*. If you are willing to help us maintain our array of outstanding programs, projects, and publications, send a check payable to "Pi Gamma Mu" along with a note identifying your name, your mailing address, and the name of the college or university whose chapter initiated you. This is our address:

Pi Gamma Mu
1001 Millington Street, Suite B
Winfield, Kansas 67156

If you would like to discuss the possibility of establishing a scholarship fund, call our executive director at (620) 221-3128, or send an E-mail message (executivedirector@pigammamu.org). We will happily assist you to establish a scholarship in your name, or in the name of someone whom you would like to honor or memorialize.

For more information, visit the Web page at <http://www.pigammamu.org/donate.html>.

 The Print donation coupon is available at <http://www.pigammamu.org/newsletter/common/donate.pdf>

Thank you!

We gratefully acknowledge those who donated to Pi Gamma Mu during the 2012-2013 fiscal year, which concluded on August 31, 2013.

Arkansas State University
Dr. Charles Hartwig

Dominican University
Dr. Janice Monti

Francis Marion University
Darrell P. Jameson

Ohio University
Charles Joseph

Montclair State University
Dr. John Patierno

Newman University
Dr. Larry Heck

University of North Georgia
Dr. Barry Friedman

Saint Leo University
Dr. Susan Kinsella

Salisbury University
Dr. Clara Small

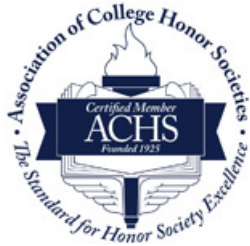
Washington & Jefferson College
Dr. Yongsheng Wang

Wayne State College
Dr. Jean Karlen

Wheaton College
Dr. Stanley W. Moore

Dave Watters, Winfield, Kans.

ASSOCIATION OF COLLEGE HONOR SOCIETIES



ACHS Membership Protects the Legitimacy of Honor Societies

Pi Gamma Mu is one of 68 members of the **Association of College Honor Societies (ACHS)**, which is the authority on standards and definitions for the honor society movement. ACHS has stepped up efforts to alert the higher education community to the standards of traditional honor societies. In contrast, some new so-called honor societies exist online and allow self-nomination, accepting fees with no questions asked. If in doubt about an organization, you can check out the ACHS Web site (www.achsnatl.org) for the [list of honor societies](#) that are members.

IDEALS OF PI GAMMA MU

There are seven ideals of Pi Gamma Mu. Do you know them?

1. **Scholarship** – it is basic to all the rest. With knowledge, we can build society and better understand humanity and what has been thought and said and tried in all generations.
2. **Science** – we need and admire the spirit of science – the firm belief that the problems that confront humanity can be solved if we will search out the facts and think clearly on the basis of those facts.
3. **Social Science** – we shall never understand or solve the problems of human association until we examine the souls of people, the passions, prejudices, hopes and fears.
4. **Social Idealism** – we believe in a human society fit for human life that humans themselves can build. “Where there is no vision the people perish.” We will not give up our vision.
5. **Sociability** – specialization makes us narrow. Our social problems are complex. They will never be solved without the cooperation of all the social sciences and of those who study them.
6. **Social Service** – the primary purpose of science is to know and to enable us to do. What we know we want to put to work for the benefit of humanity.
7. **Sacrifice** – we are engaged in the greatest and finest of all the arts, the building of human society. Without giving freely, fully, and sacrificially of means, time, talent, energy and passion, all our other ideals will fall short and the contributions we hope to bring will never come.

©2013 Pi Gamma Mu®

Pi Gamma Mu Newsletter is available online at <http://www.PiGammaMu.org/newsletter.html>